



D T 2035

Van Dutch 40 “Connect”

Premium cocktail powerboat for 10 people

Length: 12.08 meters (40 feet)

Beam (Width): 3.5 meters (11.5 feet)

Maximum Speed: up to 40 knots

Capacity: up to 10 passengers

VanDutch 40 is an elegant powerboat, perfect for those who appreciate stylish and dynamic leisure on the water. With its modern design, powerful engines, and thoughtfully designed relaxation areas, it provides comfortable conditions for short sea trips and swimming in scenic bays. Ergonomic seating and a spacious cockpit create a cozy atmosphere, while attention to detail ensures every journey is unforgettable.

Link: [More photos Van Dutch 40](#)

Link: [PDF photos](#)

Price 1 000 AED / 1 hour

Minimum order 2 hours





Everything is on board the most comfortable and enjoy your holiday:

- Mini-bar, Coffee machine;
- Refrigerator;
- 2 bucket of ice for champagne;
- 11 speaker 3KW Hi-End music system;
- Natural wool blankets;
- Toilet and a small cozy cabin.

Link: [More photos Van Dutch 40](#)

Link: [PDF photos](#)



Swimming area

Route along the Dubai beaches

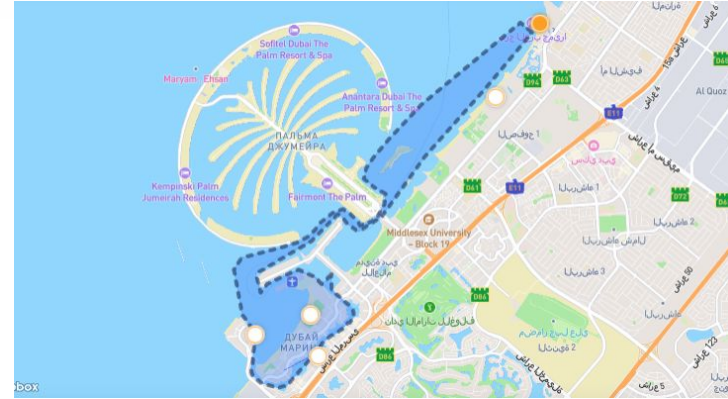
Route:

Dubai Harbour - Dubai Marina - Dubai Eye - Burj Al Arab

Total time: **2 Hour**

Total distance: **27 km**

Price 2 000 AED



Route around the Palm

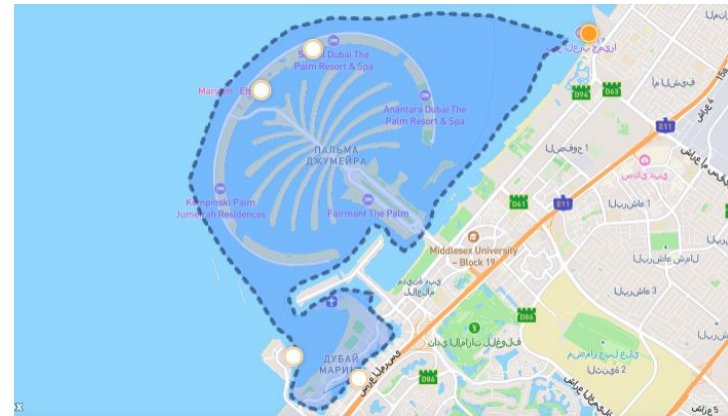
Route:

Dubai Harbour - Dubai Marina - Bluewaters island - Palm Jumeirah - Atlantis hotel - Burj Al Arab - Dubai Harbour

Total time: **3 Hour**

Total distance: **35 km**

Price 3 000 AED



Swimming Route

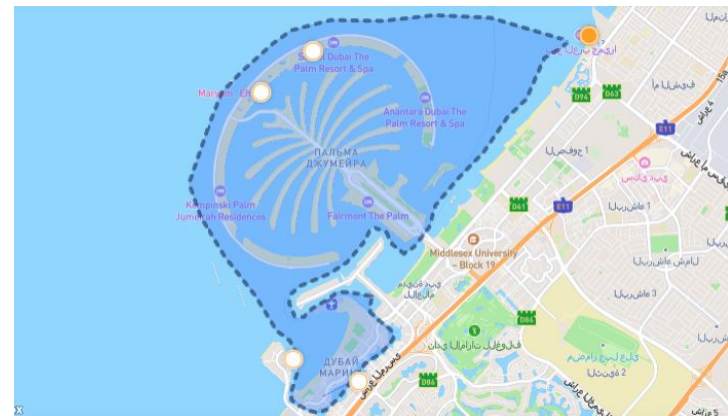
Route:

Dubai Harbour - Dubai Marina - Bluewaters island - Palm Jumeirah - Atlantis hotel - Burj Al Arab - Dubai Harbour

Total time: **4 Hour**

Total distance: **40 km**

Price 4 000 AED



Swimming area

Route to Dubai Creek

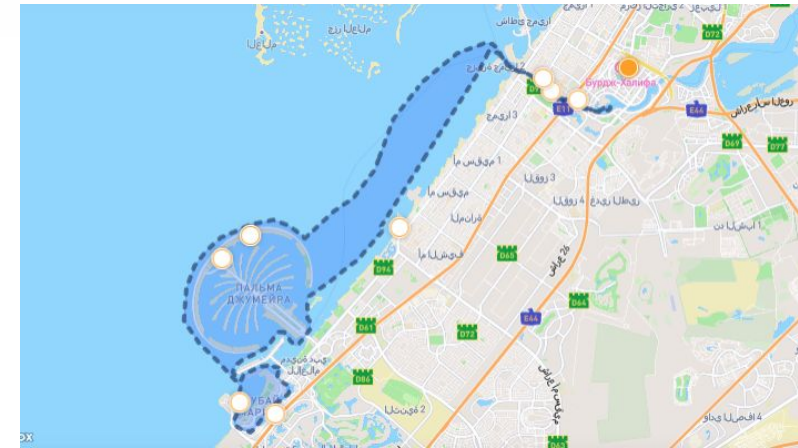
Route:

Dubai Marina - Bluewaters island / Dubai Eye - Palm Jumeirah - Atlantis hotel - Burj Al Arab - Dubai Creek - Tolerance bridge / Waterfall bridge - Business Bay / Burj Khalifa

Total time: **5 Hour**

Total distance: **58 km**

Price 5 000 AED



"7 wonders of Dubai" Route

Route:

Dubai Marina — Dubai Eye — Palm Jumeirah — Atlantis residences — Burj Al-Arab — Tolerance bridge, Waterfall bridge — Business Bay — Burj Khalifa — "old" city — islands of the "World" archipelago

Total time: **8 Hour**

Total distance: **90 km**

Price 8 000 AED

